

GENUINE GRACO PARTS AND ACCESSORIES

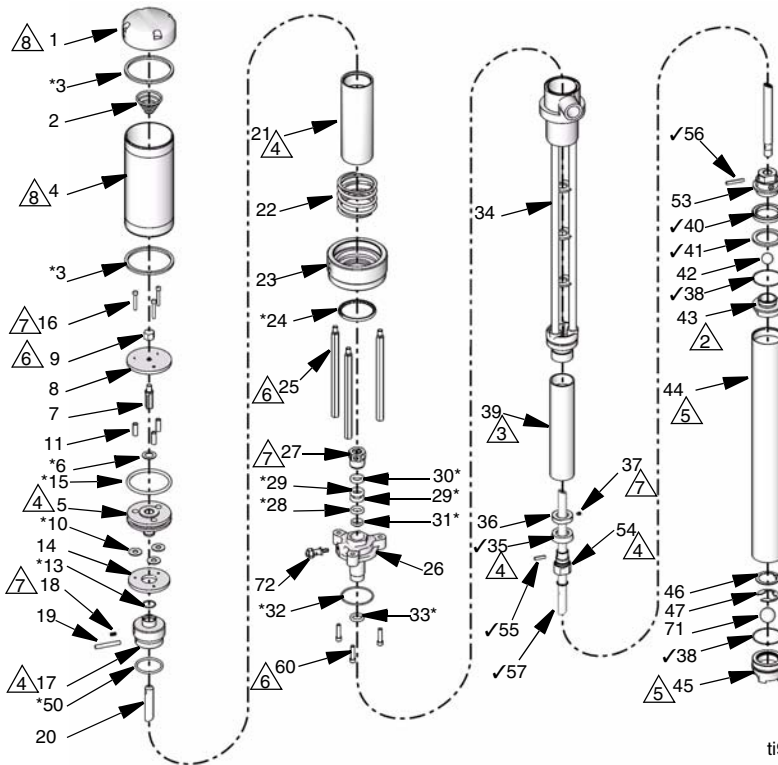


Seal Repair Kit

for T2 2:1 Ratio Transfer Pump

258003 Complete Seal Kit,
247882 Upper Seal Kit, and
247883 Lower Seal Kit

406663B



Ref	Description	Qty
3*	PACKING, square	2
6*	GASKET, upper	1
10*	GASKET, lower	3
13*	O-RING	1
15*	O-RING	1
24*	O-RING	1
28*	GLAND, packing, (male)	1
29*	V-PACKING, PTFE	2
30*	GLAND, packing, (female)	1
31*	WIPER, ROD	1
32*	O-RING, PTFE, encapsulated	1
33*	GASKET, PTFE	1
35✓	PACKING, piston cup	1
38✓	O-RING	2
40✓	PACKING, u-cup, PTFE	1
41✓	RING, wear	1
50*	O-RING	1
55✓	PIN, straight, 3/16 x 3/4	1
56✓	PIN, straight, 3/16 x 1 1/4	1
57✓	O-RING	1

* Parts in Upper Seal Kit 247882.

✓ Parts in Lower Seal Kit 247883.

△ See notes and torque specs on reverse side of this sheet.

ti9890

Graco Inc. P.O. Box 1441 Minneapolis, MN 55440-1441
406663 Rev. B 12/2007
Copyright 2007, Graco Inc. is registered to I.S. EN ISO 9001



Important Safety Instructions

Read all warnings and instructions in manual 311882.
Save those instructions.

Notes for illustration on reverse side of this sheet

- △1 Lubricate all o-rings and seals before and after assembly)
- △2 Torque to 45-55 ft-lbs (61-74.5 N•m)
- △3 Torque to 30-40 ft-lbs (40.6-54.2 N•m)
- △4 Torque to 15-20 ft-lbs (20.3-27.1 N•m)
- △5 Torque to 10-12 ft-lbs (13.5-16.3 N•m)
- △6 Torque to 110-120 ft-lbs (149.1-162.7 N•m)
- △7 Torque to 20-30 ft-lbs (27.1-40.7 N•m)
- △8 Torque to 50-60 ft-lbs (67.8-81.3 N•m)
- △9 Tighten 1/8 to 1/4 turn past finger-tight